

PAPER FLUTE LAMINATOR MASTER



Follow our WhatsApp



Follow our Tiktok

GUANGDONG FENGCHI PRINTING MACHINERY CO.,LTD
Add: No. 1, Shangzhong Road, Liaobu Town, Dongguan City,
Guangdong Province, 523422, China
TEL: +86 133 1668 2162
Web: www.laminatorfc.com
Email: info@laminatorfc.com

COMPANY PROFILE



Guangdong Fengchi Printing Machinery Co,LTD. started business since, who is the only manufacturer specialized in flute laminating machine/gluing and folding machine/folder gluer and stitcher machine/UV printer machine all the time. As master in this industry, we provide world-class laminating machines with reasonable price. We serve the paper printing & packaging industry such as color boxes and corrugated carton, help solve the manufacturing process of over-gluing laminating and stacking after the post-printing for color cardboard & corrugated cartons. Customized service is carried out according to the actual needs of users.

Be different from other multi-category equipment company, FENGCHI only focus on laminating machines and made continuous breakthrough innovations in laminating speed and self-developed patents in past years. All products are strictly granted by CE standard and factory is granted with ISO quality system.

FENGCHI is a technology-oriented factory with strong R&D team of nearly people with more than years in the printing and packaging industry, half of R&D team are Doctor Degree. Now we have have after-sale office in China, Europe, Vietnam, India, Malaysia, Korea, Indonesia, we aim to build global after-sale center before. Because of the professional design, stable quality, innovative technology, reasonable price and perfect after-sale service, FENGCHI became the top one turnover in China for paper laminator machine in.

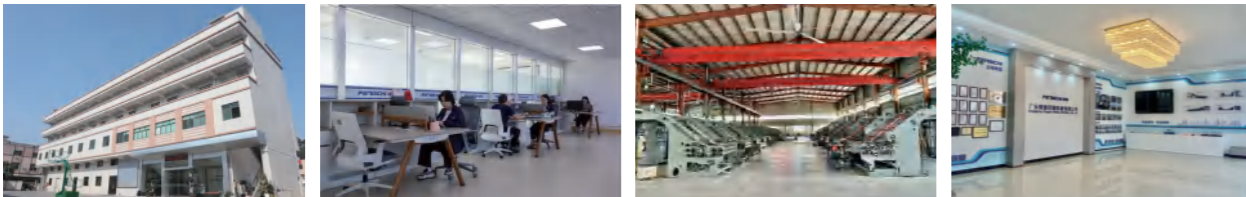
16 YEARS EXPERIENCE

PLANT SIZE: **10,000** M²

EMPLOYEE: **150** PERSONS

NO.1 SHIPMENT SUPPLIER(**600+** /YEAR)

ISO9001, CE HIGH-TECH ENTERPRISE



FENGCHI 锋驰

PAPER FLUTE LAMINATOR MASTER FROM CHINA



National High-Tech Enterprise



Products are qualified by the third-party testing agency



Products are found in more than **53** countries around the world



Chosen by more than **4000** users



Products are CE certified



Quality Management System Certification



Environmental Management System Certification

HONORS AND CERTIFICATES








- ① In 2015, we obtained **6** utility model patents and **3** invention patents.
- ② In 2016, the product passed the **EU CE** safety certification.
- ③ In 2017, it was rated as **Guangdong Province High-tech enterprise**.
- ④ Elected as the **Dongguan High-tech Industry Association** in 2018 The first governing unit.
- ⑤ In 2020, the single product model became the sales leader.
- ⑥ In 2023, overseas market share surpassed **50%**, securing the **No.1** global market dominance position.



GW SERIES

FULL SERVO HIGH SPEED FLUTE LAMINATOR

(Cardboard to Flute & Cardboard to Cardboard)

-  HIGH-SPEED OPERATION
-  QUICK JOB-CHANGE IN 3MINS
-  ONE-KEY ADJUSTMENT
-  FULL SERVO CONTROLLED
-  STREAMLINED MAINTENANCE



TECHNICAL PARAMETER

Leading edge feeder version :

Model	GW-1450LP	GW-1700LP	GW-2200LP
Max paper size :	1450mm*1450mm	1700mm*1650mm	2200mm*2100mm
Min paper size :	360mm*360mm	360mm*360mm	450mm*380mm
Bottom Paper Sheet Thickness :	F flute-10mm		
Upper Paper Sheet Thickness :	150g-700g		
Max Speed :	16000 Sheets/hour (165 m/min)		
Laminating Accuracy :	±1.0mm (Standard Sheet Paper)		
Applicable Glue :	Resin adhesive, starch glue, milky glue (PH6~8 will be suitable)		
Machine Weight :	8000kg	8500kg	9000kg
Dimension (LxWxH) :	15700mm*2400mm*2550mm	16300mm*2650mm*2550mm	18500mm*3050mm*2880mm
Voltage :	380VAC/3P		
Power :	26kw	30kw	32kw
Applicable paper :	A,B,C,E,F,3ply,5ply,7ply corrugated board, and cardboard within above mentioned thickness range		

*This is the current configuration. It may be updated with technical updates and upgrades.

Belt feeder version :

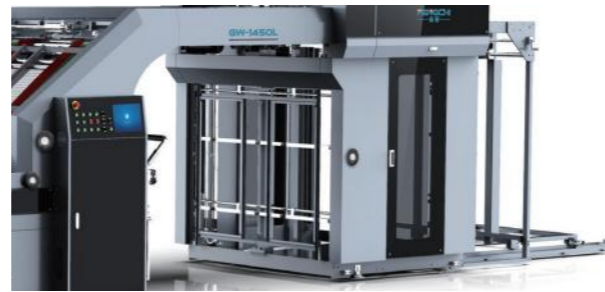
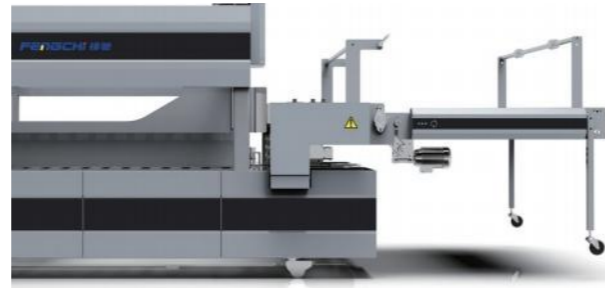
Model	GW-1450BP	GW-1700BP	GW-2200BP
Max. Sheet Size(W x L):	1450mm*1450mm	1700mm*1650mm	2200mm*2100mm
Min. Sheet Size (W x L) :	360mm*360mm	360mm*360mm	450mm*380mm
Bottom Paper Sheet Thickness :	300gsm - 10mm		
Upper Paper Sheet Thickness :	150g-700g		
Max. Working Speed :	16000 Sheets/hour (165 m/min)		
Laminating Accuracy:	+1.0mm (Standard Sheet Paper)		
Applicable Glue :	Resin adhesive, starch glue, milky glue (PH6~8 will be suitable)		
Machine Weight :	8000kg	8500kg	9000kg
Dimension (LxWxH) :	15700mm*2400mm*2550mm	16300mm*2650mm*2550mm	18500mm*3050mm*2880mm
Voltage :	380VAC/3P		
Power :	26kw	30kw	32kw
Bottom paper applicable:	Cardboard above 300gsm, and A, B, C, E, F, 3ply, 5ply corrugated board		

*This is the current configuration. It may be updated with technical updates and upgrades.

GW SERIES

FULL SERVO HIGH SPEED FLUTE LAMINATOR

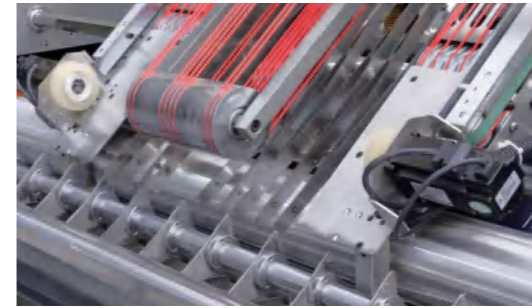
PRODUCT IMAGE



PRODUCT FEATURES

- Working speed: 165m/min (16000sheets/hour); For small paper sizes, the speed can be faster.
- Easy to switch according to different production batches: Make ready in 2-5 minutes. Improve production efficiency.
- Optional machine sizes: 1450/1700/2200mm, match with different printing machines and other post-press machines sizes.
- Full servo control, large size rollers with double bearings at each end, automatic lubrication system, photoelectric detection / sensor and alarm system and self-developed operation system to achieve high stability, high speed, and high efficiency.
- Very easy to operate and maintain. Remote control for debugging is also available.

PRODUCT HIGHLIGHTS



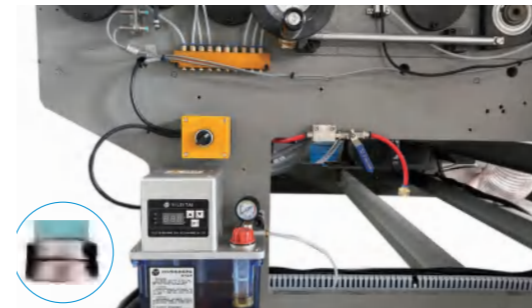
■ Paper Aligning System

Full-servo tracking system to ensure stability and highprecision.



■ Leading-edge Feeder System

Self-developed leading-edge feed system specially for deformed, warped corrugated papers.



■ Automatic Lubrication System

Automatic refueling system aim for maintenance-free equipment.



■ Double Bearing with 150mm Roller

Bigger roller with diameter 150mm, double bearings for better stability and longer service life.



■ Special Belt Feeder System

The unique belt feed specially applies for all kind of thick and thin cardboard paper, improve the lamination accuracy. Minimum bottom paper thickness is 300gsm.








■ Operating System

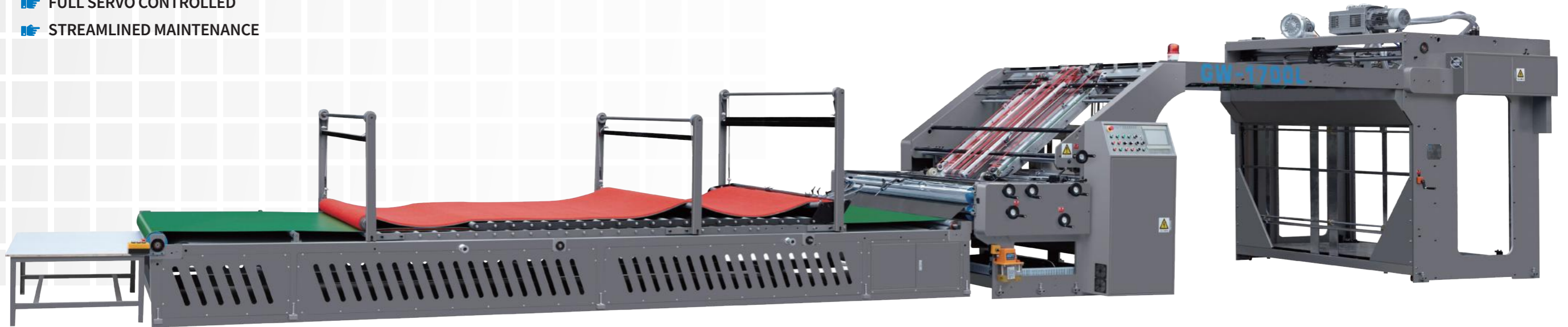
Self-developed full servo control system in accordance with CE standard.

GW SERIES

FULL SERVO HIGH SPEED FLUTE LAMINATOR

(Cardboard to Flute & Cardboard to Cardboard)

-  HIGH-SPEED OPERATION
-  QUICK JOB-CHANGE IN 3MINS
-  ONE-KEY ADJUSTMENT
-  FULL SERVO CONTROLLED
-  STREAMLINED MAINTENANCE



TECHNICAL PARAMETER

Leading edge feeder version :

Model	GW-1450L	GW-1700L	GW-2200L
Max paper size :	1450mm*1450mm	1700mm*1650mm	2200mm*2100mm
Min paper size :	360mm*360mm	360mm*360mm	450mm*380mm
Bottom Paper Sheet Thickness :	F flute-10mm		
Upper Paper Sheet Thickness :	150g-700g		
Max Speed :	16000 Sheets/hour (165 m/min)		
Laminating Accuracy :	±1.0mm (Standard Sheet Paper)		
Applicable Glue :	Resin adhesive, starch glue, milky glue (PH6~8 will be suitable)		
Machine Weight :	8000kg	8500kg	9000kg
Dimension (LxWxH) :	15700mm*2400mm*2550mm	16300mm*2650mm*2550mm	18500mm*3050mm*2880mm
Voltage :	380VAC/3P		
Power :	26kw	30kw	32kw
Applicable paper :	A,B,C,E,F,3ply,5ply,7ply corrugated board, and cardboard within above mentioned thickness range		

*This is the current configuration. It may be updated with technical updates and upgrades.

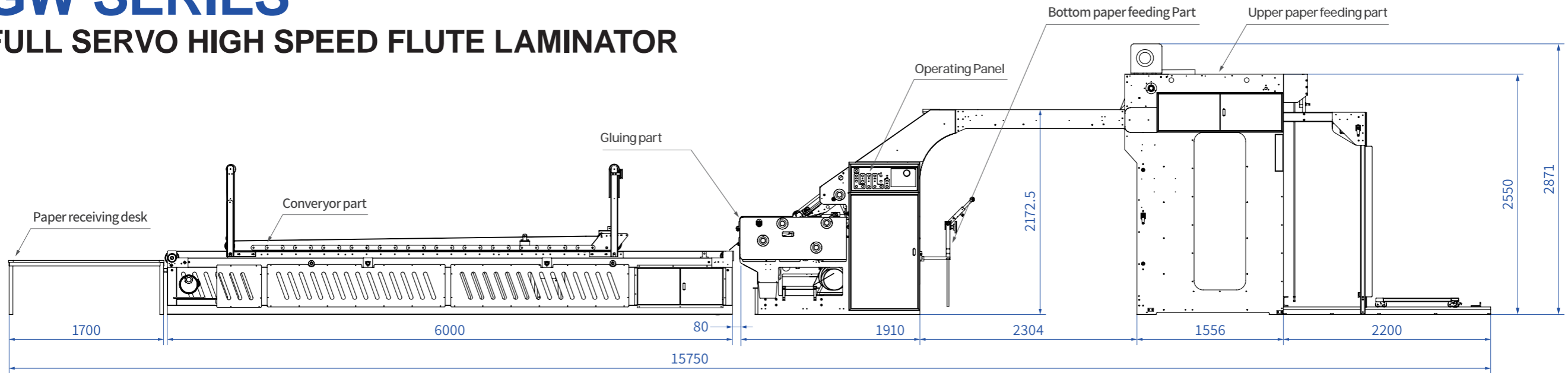
Belt feeder version :

Model	GW-1450B	GW-1700B	GW-2200B
Max. Sheet Size(W x L):	1450mm*1450mm	1700mm*1650mm	2200mm*2100mm
Min. Sheet Size (W x L) :	360mm*360mm	360mm*360mm	450mm*380mm
Bottom Paper Sheet Thickness :	300gsm - 10mm		
Upper Paper Sheet Thickness :	150g-700g		
Max. Working Speed :	16000 Sheets/hour (165 m/min)		
Laminating Accuracy:	+1.0mm (Standard Sheet Paper)		
Applicable Glue :	Resin adhesive, starch glue, milky glue (PH6~8 will be suitable)		
Machine Weight :	8000kg	8500kg	9000kg
Dimension (LxWxH) :	15700mm*2400mm*2550mm	16300mm*2650mm*2550mm	18500mm*3050mm*2880mm
Voltage :	380VAC/3P		
Power :	26kw	30kw	32kw
Bottom paper applicable:	Cardboard above 300gsm, and A, B, C, E, F, 3ply, 5ply corrugated board		

*This is the current configuration. It may be updated with technical updates and upgrades.

GW SERIES

FULL SERVO HIGH SPEED FLUTE LAMINATOR



PRODUCT FEATURES

- Working speed: 165m/min (16000sheets/hour); For small paper sizes, the speed can be faster.
- Easy to switch according to different production batches: Make ready in 2-5 minutes. Improve production efficiency.
- Optional machine sizes: 1450/1700/2200mm, match with different printing machines and other post-press machines sizes.
- Full servo control, large size rollers with double bearings at each end, automatic lubrication system, photoelectric detection / sensor and alarm system and self-developed operation system to achieve high stability, high speed, and high efficiency.
- Very easy to operate and maintain. Remote control for debugging is also available.



■ Automatic Lubrication System

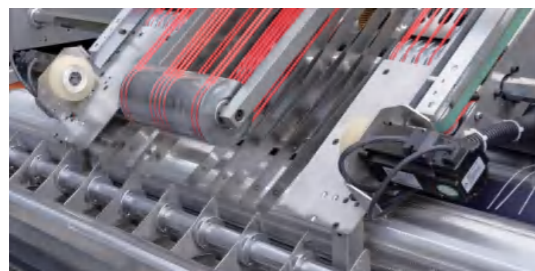
Automatic refueling system aim for maintenance-free equipment.



■ Double Bearing with 150mm Roller

Bigger roller with diameter 150mm, double bearings for better stability and longer service life.

PRODUCT HIGHLIGHTS



■ Paper Aligning System

Full-servo tracking system to ensure stability and highprecision.



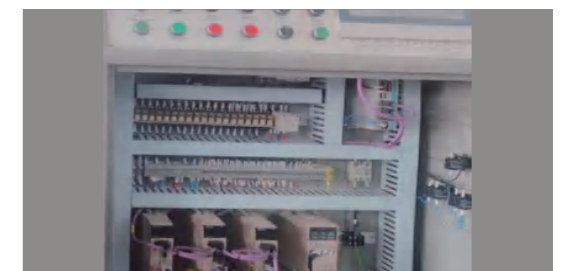
■ Leading-edge Feeder System

Self-developed leading-edge feed system specially for deformed, warped corrugated papers.



■ Special Belt Feeder System

The unique belt feed specially applies for all kind of thick and thin cardboard paper, improve the lamination accuracy. Minimum bottom paper thickness is 300gsm.



■ Operating System

Self-developed full servo control system in accordance with CE standard.

GE SERIES

UNIVERSAL AUTOMATIC HIGH SPEED PAPER LAMINATOR



TECHNICAL PARAMETER

Model	GE-1450B	GE-1450BP
Max paper size :	1450mm*1450mm	
Min paper size :	360mm*360mm	
Bottom Paper Sheet Thickness :	300gsm~10mm	
Upper Paper Sheet Thickness :	150gsm-700gsm	
Working Speed :	13,000 sheets/hour (153M/min) (Depends on paper quality)	
Laminating Accuracy :	±1.0mm Standard Sheet Paper	
Applicable Glue :	Resin adhesive, starch glue and etc. (PH 6~8 will be suitable for laminating glue)	
Machine Weight :	7000kg	
Dimension (LxWxH) :	15.4m*2.3m*2.55m	
Power :	20kw	
Applicable paper :	A,B,C,E,F, 3ply,5ply corrugated board, and cardboard within above mentioned range	
Automatically adjust glue amount :	No	Yes
Automatically adjust roller height :	No	Yes

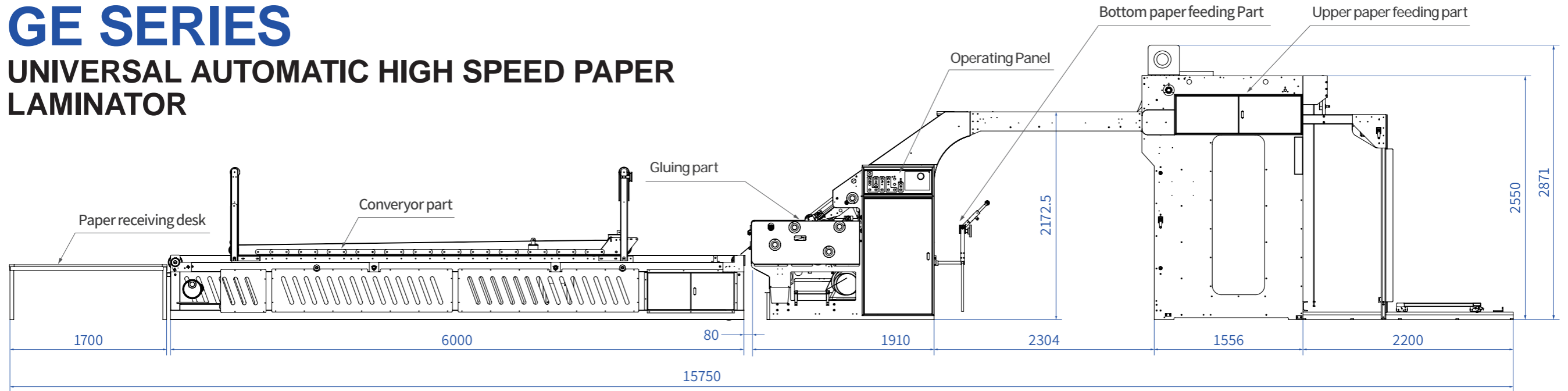
*This is the current configuration. It may be updated with technical updates and upgrades.

PRODUCT FEATURES

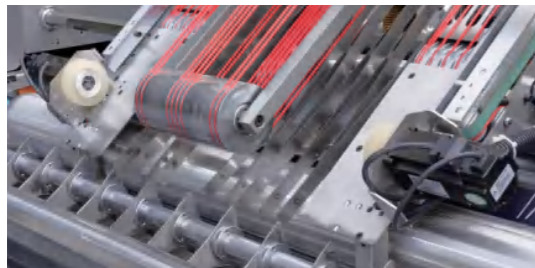
- Laminating speed: 153 m/min(13,000 sheets/hour);
- Change over in: 2-5 minutes;
- Maintenance-free with auto-refueling system;
- Kinetic energy recovery system, save power, more economical.

GE SERIES

UNIVERSAL AUTOMATIC HIGH SPEED PAPER LAMINATOR

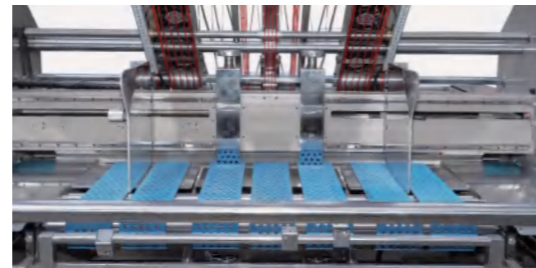


PRODUCT HIGHLIGHTS



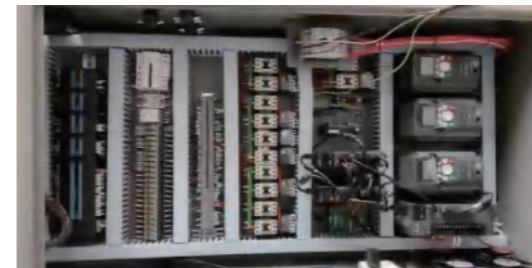
Paper Aligning System

Full-servo tracking system to ensure stability and high precision.



Feeding System for Bottom Paper

Adopting advanced high speed motion control servo tracking system to ensure the laminating accuracy.



Operating System

Self-developed full servo control system in accordance with CE standard.



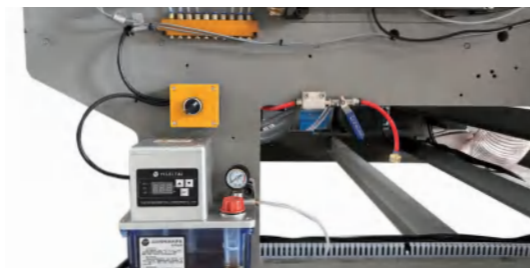
Pre-stacking System

Pre-stacking system ensure job-change around 2-5mins.



Simple operation interface

Full servo automatically adjust the amount of glue and the height of bottom board, the quality control becomes simpler and easier, and greatly reduce dependence on operator.



Auto Refueling System

Automatic refueling system aim for maintenance-free equipment.

MAJOR CLIENTS



MAJOR SUPPLIERS



GK SERIES

FULL AUTOMATIC CARDBOARD PAPER LAMINATOR



PRODUCT FEATURES

- High Accuracy-the full servo controlled with digital operating system automatically adjusts the machine, laminating accuracy up to $\pm 0.5\text{mm}$.
- High Speed-maximum laminating speed can reach to 10,000 sheets/hour.
- Wide Applicability-Using front feeder suitable for the thinnest top paper 100gsm and thinnest bottom paper 180gsm.
- High Automation-One key operation by inputting paper size, automatic feeding on upper and bottom paper, and automatic paper collecting after laminating.
- Makeready Time: 2-5 minutes. When paper size and thickness is input and all functions work automatically.

GK SERIES

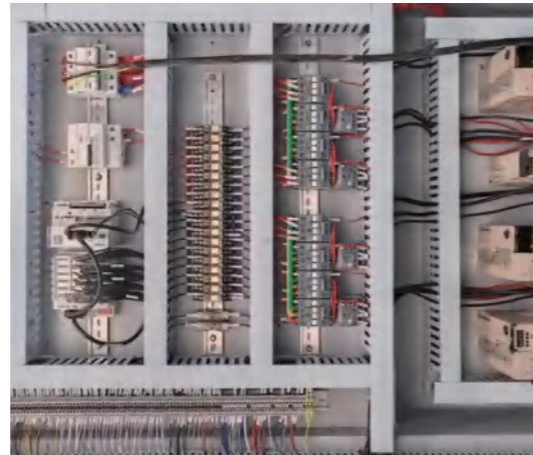
FULL AUTOMATIC CARDBOARD PAPER LAMINATOR

PRODUCT HIGHLIGHTS



Laminating Part

The paper lamination alignment adopts differential speed tracking, and the top paper and bottom paper are simultaneously handed over to the alignment guide to ensure accurate lamination.



Electric System

Adopt well-known brands from domestic and abroad, in accordance with the European CE standard design can achieve remote control and maintenance of equipment upgrade.

TECHNICAL PARAMETER

Model	GK-1307	GK-1310
Max paper size :	1300mm*720mm	1300mm*1000mm
Min paper size :	500mm*350mm	500mm*350mm
Top paper thickness :	100-700gsm	
Bottom paper thickness :	200-900gsm	
Max speed :	10000 Sheets/hour	7800 Sheets/hour
Laminating accuracy :	±0.5mm (Standard Sheet Paper)	
Applicable glue :	Starch glue, resin glue, milky glue etc.,(PH value 6-8)	
Machine weight :	6500kg	
Machine size :	9900mm*2250mm*2180m	
Input voltage :	380VAC/3P	
Power :	20kw	
Applicable paper :	Thin paper, cardboard paper,coated paper,gray board,thick paperboard etc.	

*This is the current configuration. It may be updated with technical updates and upgrades.



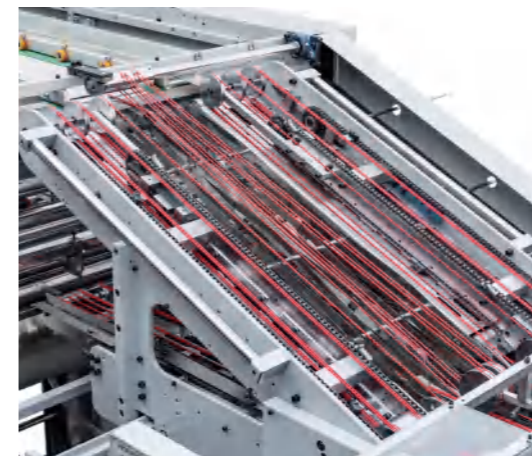
Feeding System

Using 360-degree rotating high speed, front suction and separate servo-controlled feeder, equipped with 4.0KW vacuum pump ensuring paper transmission speed is faster and more stable, can deliver thick & thin paper smoothly.



Servo-controlled Stacking System

Using servo control system ensuring each lift or drop speed can be adjusted freely, stable, smooth and seamless conversion.



Aligning System

Full-servo tracking system to ensure stability and high precision.



Paper Collecting System

The laminated paper can be automatically stacked and moved out with forklift, can greatly save the labor cost.

FZ SERIES

FULL - SERVO FLIP FLOP STACKER



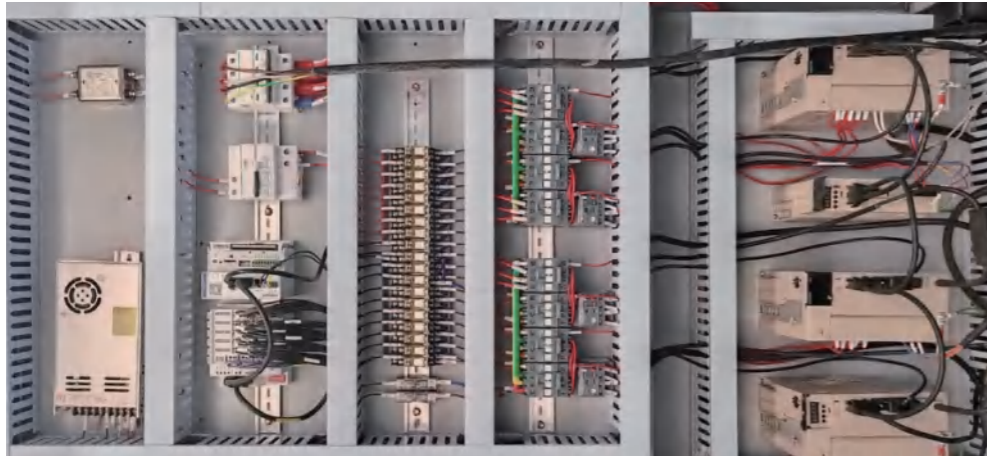
PRODUCT FEATURES

- Full servo motion control system, high-speed, smooth operation and trouble-free.
- High-speed silent track, quiet operation, long term service life.
- Minimalist operating system, safe and reliable without training, easy to operate.
- Front and back stacking with one key operation.

FZ SERIES

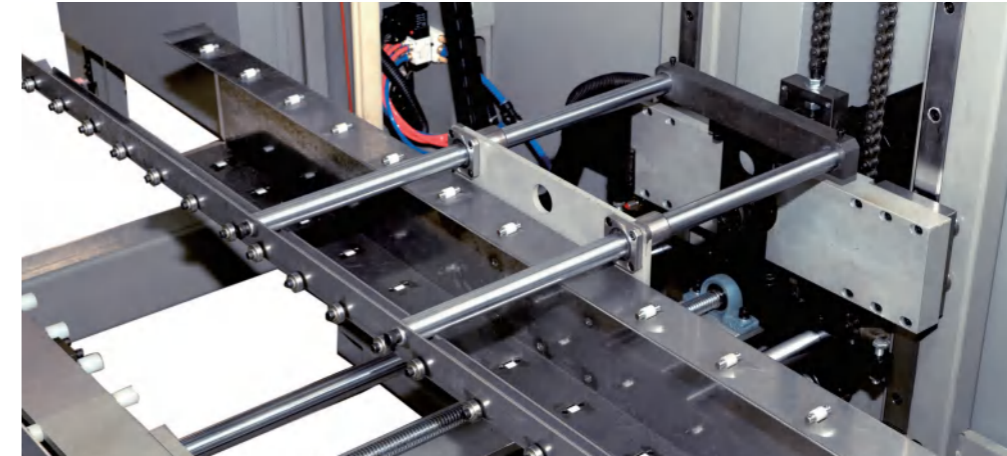
FULL - SERVO FLIP FLOP STACKER

PRODUCT HIGHLIGHTS



■ Electrical Control System

Adopting the international leading motion control technology, digital control which makes the whole machine run smoother, faster, more stable, and easier to operate.



■ Pile Turning Mechanism

Adopting High-speed silent track which is smooth, silent, wear-free, and with long term service life, the flipping servo and the lifting servo electronic cam are locked, the flipping lifting speed can be adjusted disposable.



■ Control Department

Adopting simple man-machine interface which only need to input the paper size, one key to adjust the machine, no need to use any tools, one key to start. The equipment adopts operation control technology.



■ Paper Division

The three-section independent frequency conversion speed regulation mechanism can adjust the speed of each section of the paper according to the thickness of the paper output from the main machine press.

TECHNICAL PARAMETER

Model	FZ-1450	FZ-1700
Max. Sheet Size(W * L) :	1450mmx1450mm	1700mmx1650mm
Min. Sheet Size (W * L) :	500mm x380mm	500mm x380mm
Max. Working Speed :	15000 sheet/hour	15000 sheet/hour
Machine Weight :	3800kg	4000kg
Dimension (L * W * H) :	6955mmx2432mmx2892mm	7555mmx2682mmx2892mm
Voltage :	380VAC/4P	
Power :	12KW	
Gas source :	0.8MPa >5.5KW	

*This is the current configuration. It may be updated with technical updates and upgrades.

FC SERIES

HIGH SPEED AUTOMATIC GLUING AND FOLDING MACHINE



PRODUCT FEATURES

- **Strong Stability:** independently controlled dual suction and feeding mechanism to ensure the operation stable, reliable and high accuracy.
- **High Speed:** maximum AB sheet gluing speed over 2,500 sheets/hour.
- **High Accuracy:** motion control servo position system to ensure the high precision on the alignment and automatic digital adjustment.
- **Wide applicability:** work with hot-melt or cold glue, and pressure automatic gluing from bucket.
- **One-man operation:** professional delivery line mechanism, one-men operation to save the labor cost.
- **Full Digital Automation:** servo motors control for key parameter adjustments and one-key operation.

FC SERIES

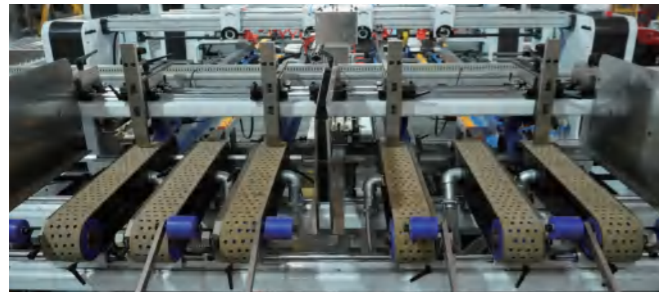
HIGH SPEED AUTOMATIC GLUING AND FOLDING MACHINE

TECHNICAL PARAMETER

Model	FC-2300Z	FC-2600Z	FC-3000Z
Maximum sheet size (single) :	1150mm*1150mm	1300mm*1150mm	1500mm*1200mm
Minimum sheet size (single) :	550mm*350mm	550mm*350mm	550mm*350mm
Feeding pile height :	400mm	400mm	400mm
Power:	16kw	16kw	16kw
Registration Accuracy :	+/-1 mm	+/-1 mm	+/-1 mm
Sheet thickness :	E flute to 10mm	E flute to 10mm	E flute to 10mm
Gross weight:	4.6T	5.0T	5.4T
Machine size (Receiving parts exclusive) :	4950mm*3300mm*1800mm	4950mm*3800mm*1800mm	4950mm*4200mm*1800mm

*This is the current configuration. It may be updated with technical updates and upgrades.

PRODUCT HIGHLIGHTS



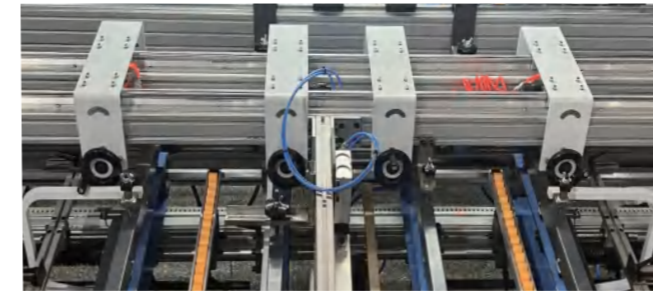
Independent Dual Feeding Mechanism

Dual suction and feeding mechanism are independently controlled to ensure paper feeding is stable and reliable, and paper feeding with high accuracy and easy to adjust.



Independent Dual Feeding Mechanism

Equipped with front and rear positioning devices, which can be easily adjusted according to different products.



Independent Dual Feeding Mechanism

The hot glue uses an aluminum glue box to heat quickly. Cold glue uses stainless steel glue box to resist corrosion. Glue storage in a bucket with pressure for automatic gluing.



Special Belt Feed System

Equipped with four conveying belts to ensure smooth sheet conveying.



Well-known Brand Electrical Components

Individual drive structure for AB sheet feeding to avoid the scratches.

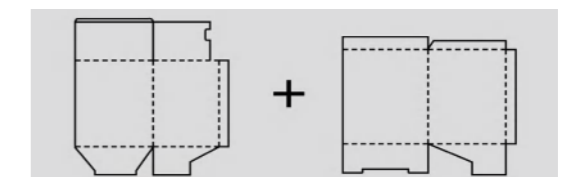
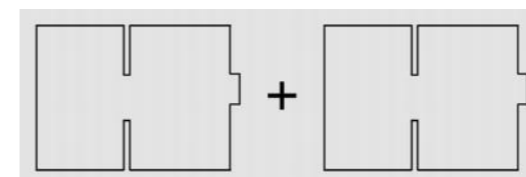


Well-known Brand Electrical Components

Well-known brand electrical components for stable operation and long-life time cycle.

PART FIVE - APPLICATION

This high speed automatic folder gluer machine is specially designed for the double-piece (AB sheet) box gluing and folding.



HD SERIES

HIGH SPEED AUTOMATIC FOLDER GLUER AND STITCHER



PRODUCT FEATURES

- The key feature of the machine is the full computer control, easy operation, stable quality, manpower saving.
- All-in-one machine, separate folder gluer, stitching, folder gluer and stitching. Single stitching, double stitching can be switched freely.
- Task-change around 3-5 mins, with order memory function.
- Suitable for A/B/C/AB, 3ply, 5ply, 7ply flute.
- Automatic paper folding, correction, stitching, gluing, counting and stacking.
- Using swin head with small power consumption, faster speed, more stable, effectively improve the quality of nail box.
- Using the paper correction function to make secondary compensation and correct the positioning, eliminate the scissors mouth.
- The automatic stitch feeding can realize stitch detection and stitch breaking.
- One-key conversion between stitching and gluing function.

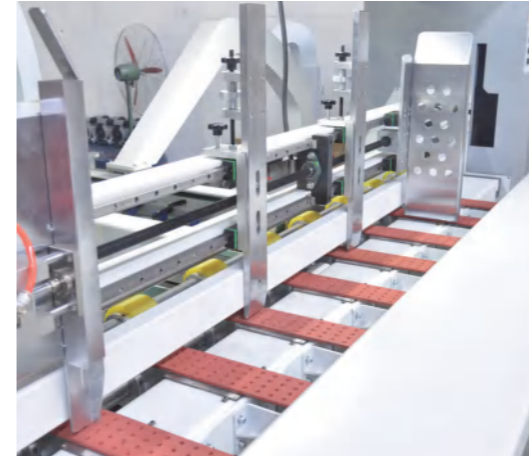
HD SERIES

HIGH SPEED AUTOMATIC FOLDER GLUER AND STITCHER

TECHNICAL PARAMETER

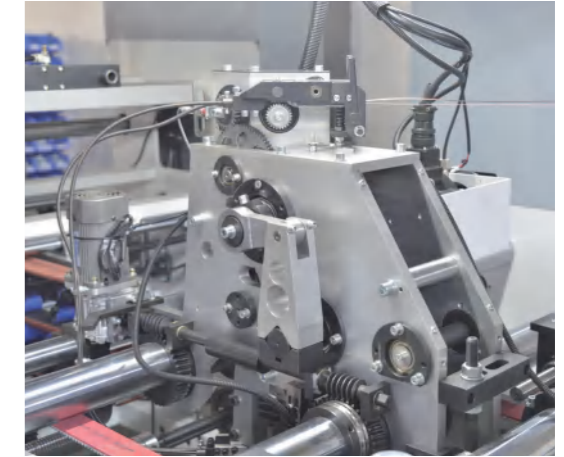
Model	HD-2800	HD-3600
Max sheet :	Width 2800 mm × Length 1100mm	Width 3600 mm × Length 1600mm
Min sheet :	Width 850mm × length 300mm	Width 1160mm × length 400mm
Max stitching speed :	1600 stitches/min	1600 stitches/min
Stiching gap :	40-500mm	40-500mm
Stitching quantity :	1-99	1-99
Machine net weight :	9.7T	12T
Machine size :	L17000mm × W4100mm × H2200mm	L19000mm × W4400mm × H2800mm
Stitch angle :	45°	45°
Air source :	0.6-0.8Mpa	0.6-0.8Mpa
Power source :	380VAC/3P, 50Hz	380VAC/3P, 50Hz
Power :	≤ 23 KW	≤ 23 KW
Applicable paper :	A, B, C, AB flute, 3ply, 5ply corrugated paper	A, B, C, AB flute, 3ply, 5ply corrugated paper

*This is the current configuration. It may be updated with technical updates and upgrades.



Feeding Part

- With the retention frame pneumatic flap, more stable, higher accuracy.
- Siegling high wear-resistance suction belt, can control the air volume, Ensure complete paper adsorption, ensure stable paper transmission, accurate positioning.
- Split air suction unit, effectively reduce the after-sales maintenance cost and time.



Stitching Part

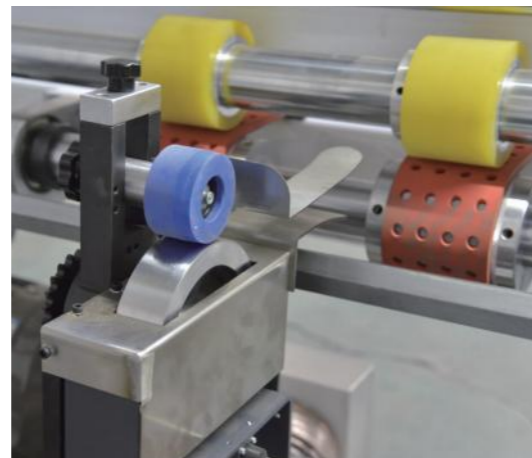
- Using the swing stitching head, small power consumption, faster speed, more stable, effectively improved the quality of nail box.
- Integrated connection mode to ensure the accurate distance, installation and maintenance and easy to operate.
- Customized alloy material to ensure that the knife is used 6 million times without wear.
- The heat dissipation properties and mechanical properties of seven series alloy aluminum are higher than those of ordinary materials.

PRODUCT HIGHLIGHTS



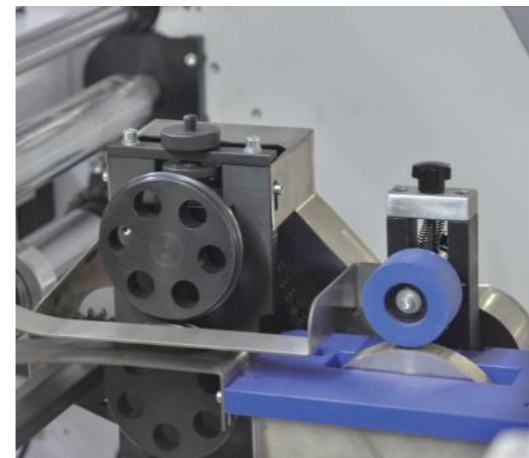
Flap Part

- Reciprocating straight line beat correction, high accuracy, stable operation.
- The forward-leaning arched beam is conducive for carton connection and transmission.
- With the sunken belt, greatly strengthen the molding accuracy and smoothness of the carton.



Creasing Part

- The independent edge pressing structure effectively solves the problem of thick cardboard blasting in the process of stitching.
- The split transmission shaft can be adjusted separately and tightened to ensure that the belt pressure is consistent, the paper is stable and effectively avoid the shaft phenomenon.



Creasing Part

- The patented design with active line pressing device to ensure the stability, good forming effect and smooth packing.



Folding Part

- Adopts synchronous belt drive to avoid the phenomenon of cold start skid and ensure the smooth transmission of paper.
- Reinforced four-axis transmission to ensure that the machine operation, transportation process is stable, no deformation.

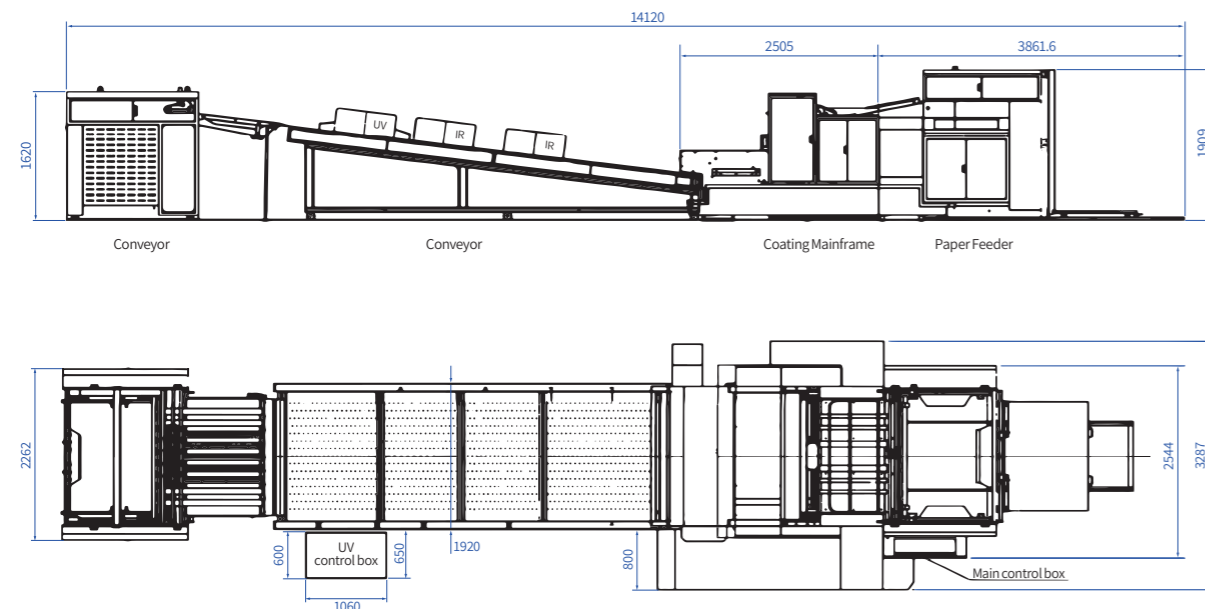
TY SERIES

FULL AUTOMATIC SPOT UV COATING MACHINE

(The equipment illustrated is the **TY-1460W**)



PRODUCT DIAGRAM



TECHNICAL PARAMETER

Model	Ty-1460W	Ty-1650W
Max.Sheet Size :	1100×1450mm (L×W)	1300×1650mm (L×W)
Min.Sheet Size :	350×460mm (L×W)	400×460mm (L×W)
Max.Coating Area :	1090×1440mm (L×W)	1290×1640mm (L×W)
Coating Registration Accuracy :	±0.15mm	±0.15mm
Coating Layer Thickness :	0.15mm ~0.60mm	0.15mm ~0.60mm
Sheet Thickness :	105 ~ 600 gsm	120 ~600 gsm
Up to :	Up to 5-6000sheet/hour (Depends on paper size, dimensions and quality)	Up to 4-5000sheet/hour (Depends on paper size, dimensions and quality)
Power Required :	68kw/Water-based: oil-based total power	76kw/Water-based: oil-based total power
Machine Dimension :	11800×3400×2300 mm	12840×3400×2360 mm
Machine Weight :	10200kg	12000kg

*This is the current configuration. It may be updated with technical updates and upgrades.

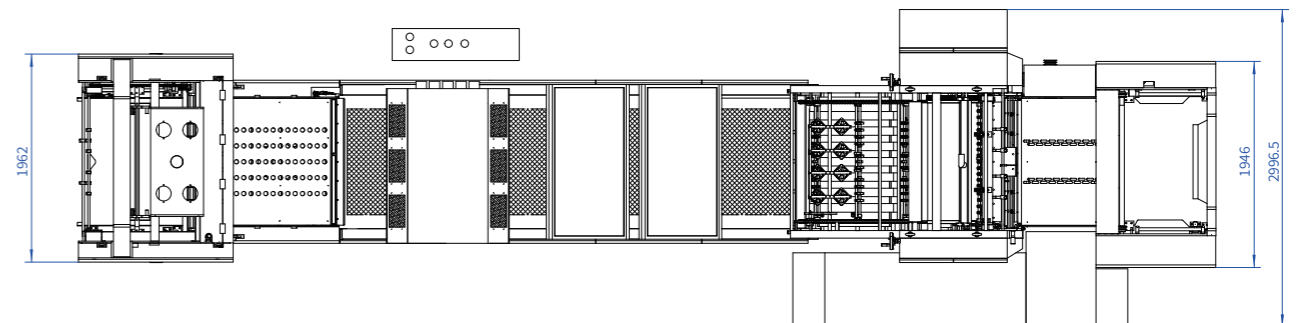
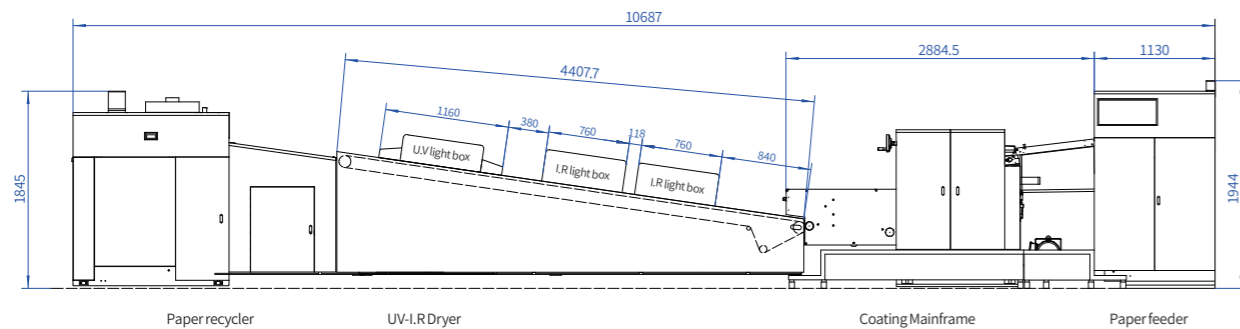
TY SERIES

FULL AUTOMATIC SPOT UV COATING MACHINE

(The equipment illustrated is the TY-106W)



PRODUCT DIAGRAM



TY SERIES

FULL AUTOMATIC SPOT UV COATING MACHINE

TECHNICAL PARAMETER

Model	TY-106W	TY-1060W-L
Max. Sheet Size :	740×1050mm (L×W)	
Min. Sheet Size :	310×406mm (L×W)	
Max. Coating Area :	730×1040mm (L×W)	
Coating Registration Accuracy :	±0.15mm	
Coating Layer Thickness :	0.15mm ~0.60mm	
Sheet Thickness :	80 ~ 500 gsm	
Up to :	6500-8000sheet/hour (Depends on paper size, dimensions and quality)	
Power Required :	40kw (W water-based)	44kw (E oil-based)
Machine Dimension :	10625×2260×2100mm	13225×2260×2100mm
Machine Weight :	7600kg	8200kg

*This is the current configuration. It may be updated with technical updates and upgrades.



Automatic Paper Feeder

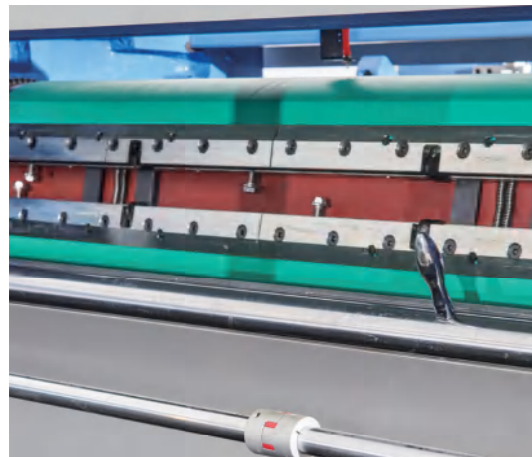
- High-reliability suction heads with linear slide rails ensure fast paper feeding, tightly delivering sheets of all sizes.
- Sensitive electro-mechanical double-sheet detector automatically stops feeding upon detecting multiple sheets.
- Maximum paper stack height: 1,150mm.
- Precision front and side guides (front guide and pull guide) with quick-adjust mechanisms for accurate positioning.



U.V. Drying and Curing Equipment

- Three UV mercury lamp units for rapid curing of UV coatings.
- Teflon mesh conveyor with bottom suction airflow ensures quiet operation, high speed, optimal curing, and easy maintenance.
- Full/half lamp switching and UV leakage protection device for operator safety.
- Built-in auto-temperature control, electronic fault trip, and cooling / exhaust system to prevent overheating.
- Dual infrared (IR) drying groups, each with 12×1kW lamp units arranged in staggered configuration.
- Auxiliary air-blowing system ensures uniform heat distribution.

PRODUCT HIGHLIGHTS



Multi-functional Coating Oil Head

- Dual-roller differential-speed coating head ensures flat, uniform, and glossy oil film with precision.
- Optional ceramic anilox roller with chambered doctor blade configuration.



Electrical Control System

- Full-machine variable frequency drive (VFD) with PLC programmable controller ensures high stability and low failure rate.



Automatic Paper Collector

- Integrated auto-loading platform with maximum stack height of 1,200mm.
- Photoelectric pneumatic dual-side alignment system for precise stacking.
- Thin-paper guiding device guarantees smooth and orderly sheet delivery.



Paper Feeding and Printing Unit

- Swing-arm sheet transfer mechanism supports maximum speed of 8,000 sheets/hour.
- Impression and coating cylinders undergo precision grinding and dynamic balancing calibration for dimensional accuracy.
- Quick-mount system for coating cylinder blankets and plate bases, enabling fast plate changes.