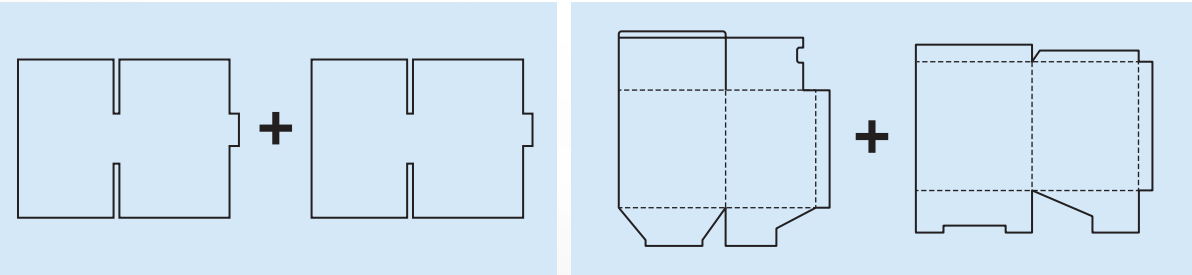


TECHNICAL PARAMETER :

Model	FC-2300Z	FC-2600Z	FC-3000Z
Maximum sheet size (single) :	1150mm×1150mm	1300mm×1150mm	1500mm×1200mm
Minimum sheet size (single) :	550mm×350mm	550mm×350mm	550mm×350mm
Feeding pile height :	400mm	400mm	400mm
Power:	16kw	16kw	16kw
Registration Accuracy :	±1 mm	±1 mm	±1 mm
Sheet thickness :	E flute to 10mm	E flute to 10mm	E flute to 10mm
Gross weight:	4.6T	5.0T	5.4T
Machine size (Receiving parts exclusive) :	4950mm×3300mm×1800mm	4950mm×3800mm×1800mm	4950mm×4200mm×1800mm

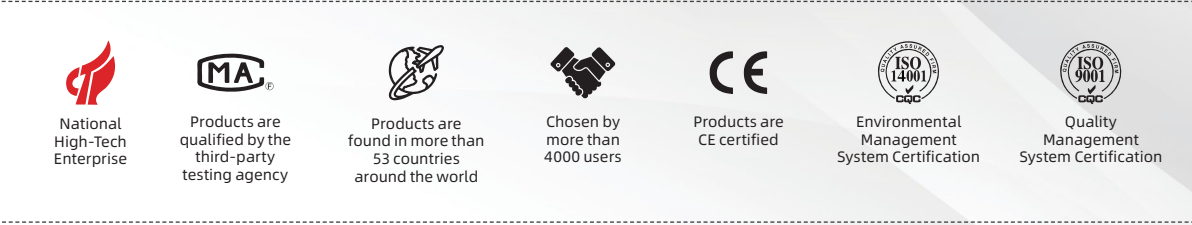
PART FIVE - APPLICATION :

This high speed automatic folder gluer machine is specially designed for the double-piece (AB sheet) box gluing and folding.



PRODUCT FEATURES :

- **Strong Stability:** independently controlled dual suction and feeding mechanism to ensure the operation stable, reliable and high accuracy.
- **High Speed:** maximum AB sheet gluing speed over 2,500 sheets/hour.
- **High Accuracy:** motion control servo position system to ensure the high precision on the alignment and automatic digital adjustment.
- **Wide applicability:** work with hot-melt or cold glue, and pressure automatic gluing from bucket.
- **One-man operation:** professional delivery line mechanism, one-men operation to save the labor cost.
- **Full Digital Automation:** servo motors control for key parameter adjustments and one-key operation.



BRAND INTRODUCTION :



Guangdong Fengchi Printing Machinery Co., Ltd., established in 2009, who is the only manufacturer specializing in single category of **Full Servo High-Speed Flute Laminator and Flip Flop Stacter** all the time. As an expert in the industry, we deliver world-class equipment at competitive price, serving the paper printing and packaging sectors, including **color boxes and corrugated cartons**. We help optimize post-press processes such as over-gluing laminating and stacking, and offer customized solutions to each customer’s needs.

FENGCHI is a technology-driven manufacturer with a strong R&D team, half of whom hold doctoral degrees and bring decades of experience in the printing and packaging industry. We’ve established after-sales offices in **China, Turkey, Europe, Vietnam, India, Malaysia, Korea, and Indonesia**—and we are actively building a global service network. Our reputation is built on professional design, reliable quality, innovative technology, competitive pricing, and exceptional after-sales support.FENGCHI, the China’s top paper laminator manufacturer, the No. 1 turnover (**500+ deliveries per year**) company in the industry.

To meet more customers expectation and integrate the industrial chain, **FENGCHI** sub-brand **ONEZIM** was launched in 2023 with same supply chain and quality level, providing **Automatic Folder Gluer Machine, Automatic Folder Gluer Stitcher, and Automatic Spot UV Coating Machine**.

FENGCHI/ONEZIM, not a follower but a leader. We aim to be the word-class post-press manufacturer.

World-class Post-Press Manufacturer

GUANGDONG FENGCHI PRINTING MACHINERY CO.,LTD

Add: No. 1, Shangzhong Road, Liaobu Town, Dongguan City, Guangdong Province, 523422, China

TEL: +86 133 1668 2162

Web: www.laminatorfc.com

Email: info@laminatorfc.com



Follow our Tiktok



Follow our WhatsApp

FENGCHI 锋驰
ONEZIM

HIGH SPEED
AUTOMATIC GLUING AND
FOLDING MACHINE

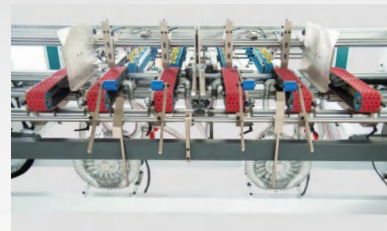
FENGCHI

FC SERIES

HIGH SPEED AUTOMATIC GLUING AND FOLDING MACHINE

MAIN FEATURES :

- STRONG STABILITY
- HIGH SPEED
- HIGH ACCURACY
- WIDE APPLICABILITY
- ONE-MAN OPERATION
- FULL DIGITAL AUTOMATION



■ Independent Dual Feeding Mechanism

Dual suction and feeding mechanism are independently controlled to ensure paper feeding is stable and reliable, and paper feeding with high accuracy and easy to adjust.



■ Sheet Delivery Individual Control

Individual drive structure for AB sheet feeding to avoid the scratches.



■ Alignment system

Motion control servo positioning system, Ensure more accurate carton alignment and faster digital adjustment.



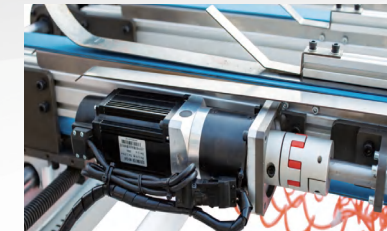
■ Strong Cohesiveness

The hot glue uses an aluminum glue box to heat quickly. Cold glue uses stainless steel glue box to resist corrosion. Glue storage in a bucket with pressure for automatic gluing.



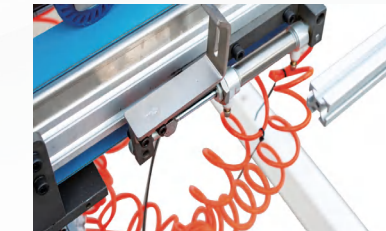
■ Special Belt Feeder System

Equipped with four conveying belts to ensures smooth sheet conveying.



■ Servo motor controlled folding

Use servo motor to fold the carton, with adjustable pressure and stable folding.



■ Positioning Device for Easy Adjustment

Equipped with front and rear positioning devices, which can be easily adjusted according to different products.



■ Well-known Brand Electrical Components

The electrical components are from well-known brands at home and abroad to ensure the normal operation of the machine.



■ Carton receiving line design

Professional receiving line design, one-man operation for input and receiving to save the labor cost in production.