

FZ SERIES

FULL SERVO FLIP FLOP STACKER

TECHNICAL PARAMETER :

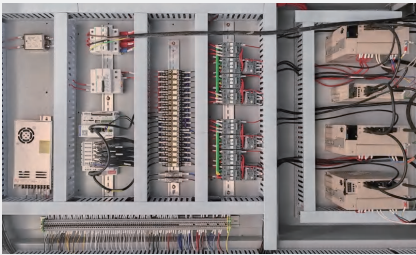
Model	FZ-1450	FZ-1700
Max.Sheet Size(W * L) :	1450mmx1450mm	1700mmx1650mm
Min.Sheet Size (W * L) :	500mm x380mm	500mm x380mm
Max. Working Speed :	15000 sheet/hour	15000 sheet/hour
Machine Weight :	3800kg	4000kg
Dimension (L * W * H) :	6955mmx2432mmx2892mm	7555mmx2682mmx2892mm
Voltage :	380VAC/4P	
Power :	12KW	
Gas source :	0.8MPa >5.5KW	



PRODUCT FEATURES :

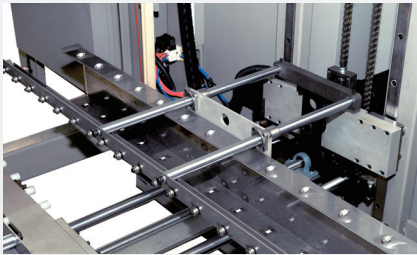
- Full servo motion control system, high-speed, smooth operation and trouble-free.
- High-speed silent track, quiet operation, long-term service life.
- Minimalist operating system, safe and reliable without training, easy to operate.
- Front and back stacking with one-key operation.

PRODUCT HIGHLIGHTS :



■ Electrical Control System

The system adopts internationally advanced motion control technology and digital control, ensuring smoother, faster, and more stable machine operation with easier usability.



■ Pile Turning Mechanism

Adopting high-speed silent track which is smooth, silent, wear-free, and with long-term service life. The flipping servo and lifting servo electronic cam are locked, the flipping lifting speed can be adjusted disposable.



■ Paper Division

The three-section independent frequency conversion speed regulation mechanism can adjust the speed of each section of the paper according to the thickness of the paper output from the main machine press.



■ Control Department

Adopting simple man-machine interface which only needs to input the paper size, one key to adjust the machine, no need to use any tools, one key to start. The equipment adopts operation control technology.