

GE SERIES

UNIVERSAL AUTOMATIC HIGH SPEED PAPER LAMINATOR

PRODUCT FEATURES :

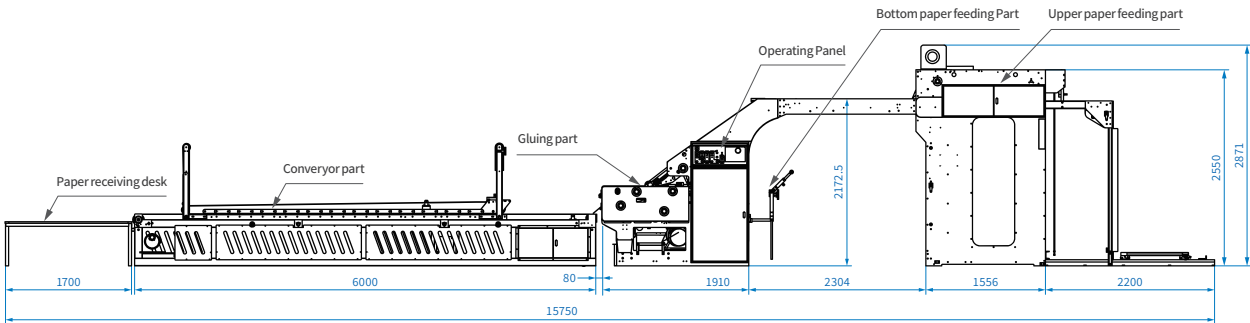
- Laminating speed: 153 m/min (13,000 sheets/hour);
- Change over in: 2-3 minutes;
- Maintenance-free with auto-lubrication system;
- Kinetic energy recovery system, save power, more economical.

TECHNICAL PARAMETER :

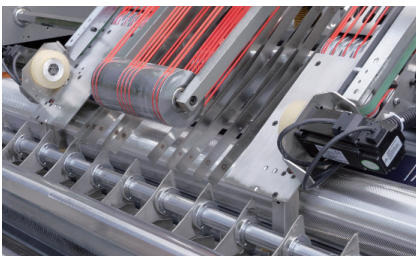
Model	GE-1450B	GE-1450BP
Max paper size :	1450mm×1450mm	
Min paper size :	360mm×360mm	
Bottom Paper Sheet Thickness :	300gsm~10mm	
Upper Paper Sheet Thickness :	150gsm-700gsm	
Working Speed :	13,000 sheets/hour (153M/min) (Depends on paper quality)	
Laminating Accuracy :	±1.0mm Standard Sheet Paper	
Applicable Glue :	Resin adhesive, starch glue and etc. (PH 6~8 will be suitable for laminating glue)	
Machine Weight :	7000kg	
Dimension (LxWxH) :	15400mm×2300mm×2550mm	
Power :	20kw	
Applicable paper :	A,B,C,E,F, 3ply,5ply corrugated board, and cardboard within above mentioned range	
Automatically adjust glue amount :	No	Yes
Automatically adjust roller height :	No	Yes



PRODUCT DIAGRAM GE-1450B :



PRODUCT HIGHLIGHTS :



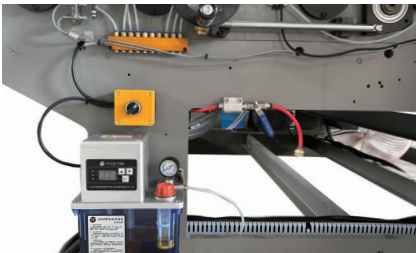
■ Paper Aligning System

The full-servo tracking system ensures stable operation and high precision.



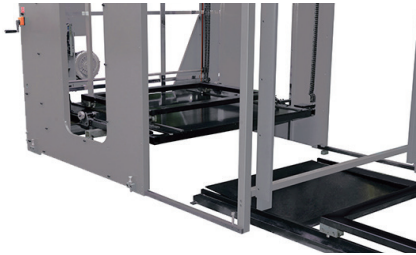
■ Feeding System for Bottom Paper

Adopting advanced high speed motion control servo tracking system to ensure laminating accuracy.



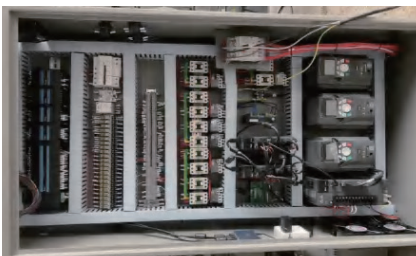
■ Auto Lubrication System

Automatic lubrication system aims for maintenance-free equipment.



■ Pre-stacking System

The pre-stacking system ensures job changeover around 2-3 minutes.



■ Operating System

The self-developed full-servo control system in accordance with CE standards.



■ Simple operation interface

Full servo automatically adjusts the amount of glue and the height of bottom board, the quality control becomes simpler and easier, and greatly reduces dependence on operator.

MAJOR CLIENTS :



MAJOR SUPPLIERS :

