

# MODEL Q

## FULL SERVO WINDOW PATCHING MACHINE

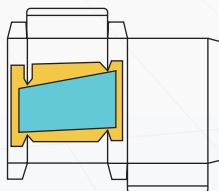
(Specialized for creasing & V cut cornering)

### MAIN FEATURES :

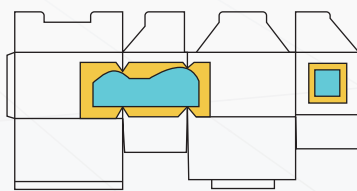
- **High-Speed Efficiency:**  
Max speed **9,000** sheets/hr (155m/min), continuous **8,000** sheets/hr (138m/min), 24h non-stop.
- **Intelligent Sheet Collection:**  
Auto count & stack collection for non-box products.
- **Precision Control:**  
**±0.5** mm film accuracy. (full-servo bus + proprietary tech)
- **Long-Term Durability:**  
**35%** load-reserve servos; **> 15** year life span.
- **Digital Intelligent Control:**  
Digital feed, glue-position & film-length settings.
- **Synergistic Drive:**  
**6** servos + **3** motors; one-touch smart operation.

### BOX TYPES :

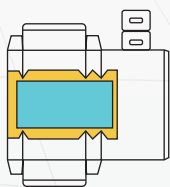
#### ■ 2 Creasing Lines



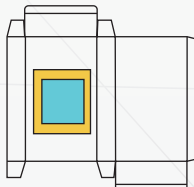
#### ■ Double Windows



#### ■ 3 Creasing Lines



#### ■ General Flat Window



### TECHNICAL PARAMETER :

Model	BTM-760Q	BTM-950Q	BTM-1100Q
Papersize (W*L)	760 * 780mm - 150 * 130mm	950 * 780mm - 150 * 130mm	1100 * 780mm - 150 * 150mm
Window dimension (W*L)	380 * 300mm - 50 * 50mm	380 * 300mm - 50 * 50mm	480 * 350mm - 50 * 50mm
Paper weight / sheet thickness	Cardboard: 200~2000g/m <sup>2</sup> Corrugated board: 1-3mm		
Filmthickness	0.1-0.3mm		
Positioning accuracy	±0.5mm		
Mechanical speed	Up to 8000sheet/hour		
Power voltage	380V/50HZ(Three-phase)		
Machine power	16KW	16KW	16KW
Machine weight	3000KG	3200KG	4000KG
Overall dimension (L*W*H)	7500 * 1600 * 2000mm	7500 * 1750 * 2000mm	7500 * 1950 * 2000mm

※ The above speeds vary according to box shape and paper type.



GUANGDONG FENGCHI PRINTING MACHINERY CO.,LTD.  
Add: No. 1, Shangzhong Road, Liaobu Town, Dongguan City,  
Guangdong Province, 523422, China

TEL: +86 133 1668 2162  
Web: [www.laminatorfc.com](http://www.laminatorfc.com)  
Email: [info@laminatorfc.com](mailto:info@laminatorfc.com)



Follow our Tiktok



Follow our WhatsApp

## PRODUCT HIGHLIGHTS :



### ■ Paper Feeding System

- Features optimally stable separation blades with zero wobble when locked, ensuring superior paper separation.
- Single-plate feeding belt simplifies maintenance and replacement.
- Linear bearings enable smooth front/rear movement of the paper pressing mechanism; pneumatic vibration motors reduce noise and optimize vibration.



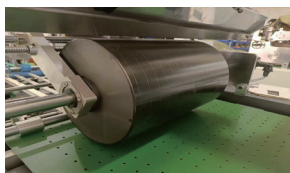
### ■ Paper Pressing Wheel Assembly

Gear-driven dual-power transmission on upper/lower wheels delivers exceptional stability during paper conveyance, particularly with corrugated paper.



### ■ Pusher Claw System

- Linear guide fixation eliminates vibration (vs. linear bearings), ensuring stable paper feed.
- Patent-certified synchronous belt drive provides quiet operation, stretch resistance, oil-free performance, low noise, and sustained precision.
- Front/rear adjustable press wheels adapt to product positions; side-fixed design simplifies setup. Side guides synchronize with claws to reduce adjustment frequency and time.



### ■ Gluing System

- Independent servo drive allows parameter input via HMI without wrenches or phase adjustment.
- Hard-anodized aluminum alloy glue rollers offer lightweight and high hardness.
- Optimized program with glue sensor enables automatic activation with product presence, separation without product, and jam alarm/shutdown.



### ■ Glue Distribution System

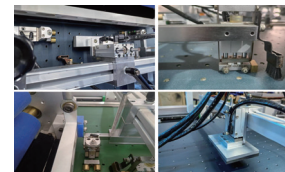
- Dedicated servo drive simplifies transmission and maintenance.
- Entire unit slides out for cleaning.



### ■ Film Forming Section

Dual-servo drive technology (patent-certified) integrates film feeding, horizontal creasing, punching, print registration, vertical creasing, and cutting for precision forming.

- **Film Feeding Unit:** Dual linear guides prevent swing arm deviation; PLC-controlled motor runs continuously during start/stop; heating optional for films  $\geq 0.25$  mm.
- **Horizontal Creasing:** Linear module + stepper motor (smooth high-speed operation, easy maintenance).
- **Punching Unit:** Cylinder-driven metal mold; front/rear adjustment (linear guides + rack-and-pinion); left/right adjustment (linear guides + ball screws).
- **Print Registration:** Precise adjustment of printed patterns.
- **Vertical Creasing Unit:** Vertical adjustment (linear guides + eccentric blocks); horizontal adjustment (guides + ball screws).
- **Cutting Unit:** Cylinder-powered spring-compressed blades for quick adjustment.



### ■ Lamination Section

- **Front positioning:** Two cylinders + four bearings + positioning block (bearings contact belt, block suspends to protect belt).
- **Side positioning:** Conventional guides or invention-patented push gauge.
- **Pneumatic double-pressing sequence:** Boxes positioned → film extended → belt stops → pressed/cut → system reset.



### ■ Box Collection Unit

Fish-scale collection structure with weighted rollers enhances film-box adhesion.



### ■ Electrical System

INOVANCE components (China's top-tier brand) with bus-based control ensure efficient, stable operation and simplified maintenance.

# MODEL P

## FULL SERVO WINDOW PATCHING MACHINE

(Ideal for Flat Window Especially for TISSUE BOX)

### MAIN FEATURES :

- **High-Speed Efficiency:**  
Max speed **36,000** sheets/hr (200m/min); continuous **32,000** sheets/hr (185m/min), 24h non-stop.
- **Intelligent Sheet Collection:**  
Auto count & stack collection for non-box products.
- **Precision Control:**  
**±1.0** mm film accuracy. (full-servo bus + proprietary tech)
- **Long-Term Durability:**  
**35%** load-reserve servos; > **15** year life span.
- **Intelligent Setup:**  
Digital settings + one-touch for glue, film, cut.
- **Synergistic Drive:**  
**9** servos for smart operation.

### PRODUCT SAMPLES :

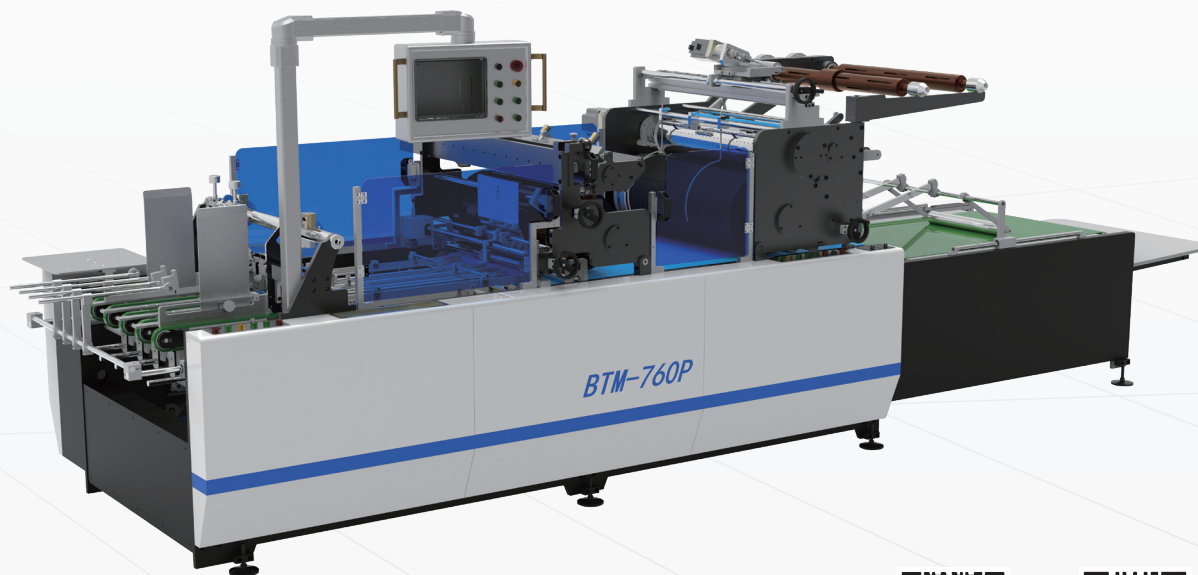
Electronic product Box, Cosmetic Box,  
Cake Box, Tissue Box, Toy Box, etc ...



### TECHNICAL PARAMETER :

Model	BTM-760P	BTM-950P	BTM-1100P
Paper specification 1st (W*L)	800 * 760mm - 100 * 100mm	1000 * 760mm - 100 * 100mm	1150 * 760mm - 100 * 100mm
Machine speed 1st (W*L)	Up to 12000 sheet/hour 0~760mm	Up to 12000 sheet/hour 0~760mm	Up to 10000 sheet/hour 0~760mm
Paper specification 2st (W*L)	800 * 420mm - 100 * 100mm	1000 * 420mm - 100 * 100mm	1150 * 420mm - 100 * 100mm
Machine speed 2st (W*L)	Up to 24000 sheet/hour 0~420mm	Up to 24000 sheet/hour 0~420mm	Up to 20000 sheet/hour 0~420mm
Paper specification 3st (W*L)	800 * 260mm - 100 * 150mm	1000 * 260mm - 100 * 100mm	1150 * 260mm - 150 * 180mm
Machine speed 3st (W*L)	Up to 36000 sheet/hour 0~260mm	Up to 36000 sheet/hour 0~260mm	Up to 30000 sheet/hour 0~260mm
Window dimension (W*L)	500 * 450mm - 30 * 50mm	500 * 450mm - 30 * 50mm	500 * 450mm - 50 * 50mm
Paper weight/sheet thickness	Cardboard: 200-2000g/m <sup>2</sup> Corrugated board: 1-3mm		
Film thickness	PET: 0.03-0.2 PVC: 0.03-0.25		
Positioning accuracy	±1 mm		
Power voltage	380V/50Hz		
Machine power	21KW		
Machine weight	3000KG	3300KG	4000KG
Overall dimension (L*W*H)	5500 * 1550 * 1800 mm	5500 * 1750 * 1800 mm	6300 * 1920 * 1800 mm

※ The above speeds vary according to box shape and paper type.



GUANGDONG FENGCHI PRINTING MACHINERY CO.,LTD.  
Add: No. 1, Shangzhong Road, Liaobu Town, Dongguan City,  
Guangdong Province, 523422, China

TEL: +86 133 1668 2162  
Web: [www.laminatorfc.com](http://www.laminatorfc.com)  
Email: [info@laminatorfc.com](mailto:info@laminatorfc.com)



Follow our Tiktok



Follow our WhatsApp



## PRODUCT HIGHLIGHTS :



### ■ Paper Feeding System

- Features optimally stable separation blades with zero wobble when locked, ensuring superior paper separation.
- Single-plate feeding belt simplifies maintenance and replacement.
- Linear bearings enable smooth front/rear movement of the paper pressing mechanism; pneumatic vibration motors reduce noise and optimize vibration.



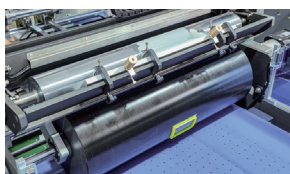
### ■ Paper Pressing Wheel Assembly

Gear-driven dual-power transmission on upper/lower wheels delivers exceptional stability during paper conveyance, particularly with corrugated paper.



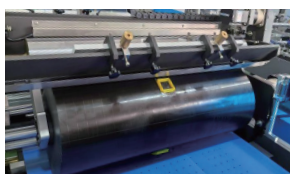
### ■ Pusher Claw System

- Linear guide fixation eliminates vibration (vs. linear bearings), ensuring stable paper feed.
- Patent-certified synchronous belt drive provides quiet operation, stretch resistance, oil-free performance, low noise, and sustained precision.
- Front/rear adjustable press wheels adapt to product positions; side-fixed design simplifies setup. Side guides synchronize with claws to reduce adjustment frequency and time.



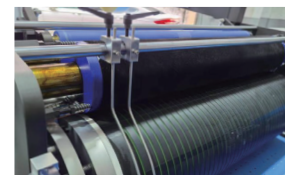
### ■ Gluing System

- Independent servo drive allows parameter input via HMI without wrenches or phase adjustment.
- Hard-anodized aluminum alloy glue rollers offer lightweight and high hardness.
- Optimized program with glue sensor enables automatic activation with product presence, separation without product, and jam alarm/shutdown.



### ■ Glue Distribution System

- Dedicated servo drive simplifies transmission and maintenance.
- Entire unit slides out for cleaning.



### ■ Film Lamination & Cutting System

- **Lamination Unit:** Monolithic roller ensures stability; aluminum alloy wear-resistant air grooves; spring + screw mechanism enables zero-pressure contact and tool-free maintenance.
- **Cutting Shaft:** 180mm diameter/40mm wall; 17 deep holes + hundreds of air holes with end grooves ensure smooth cutting.



### ■ Bottom Blade & Film Feeding

- **Bottom Blade:** Reinforced casting; V-shaped structure (spiral blade-inspired); 5mm sharp steel blade; detachable stainless steel bridge + felt prevent film scratching.
- **Film Feeding:** Dual rollers + long-arm pneumatic clamping for precise length control.



### ■ Innovative Tissue Box Slotting Unit

- Independent servo drive enables digital position adjustment.
- Manual screw fine-tuning for lateral positioning.
- Surgical blades allow easy replacement.



### ■ Film Unwinding & Collection System

- **Unwinding Unit:** Dual frames support dual-window patching; single-side fixation + operable-side access; magnetic particle brake; axial film sensor requires no recalibration.
- **Collection Unit:** Independent servo system with integrated counting function; Configurable sheet quantity and stacking intervals.



### ■ Electrical System

INOVANCE components (China's top-tier brand) with bus-based control ensure efficient, stable operation and simplified maintenance.