

MODEL Q

FULL SERVO WINDOW PATCHING MACHINE

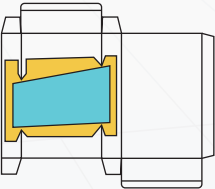
(Ideal for creasing & V-cut)

MAIN FEATURES

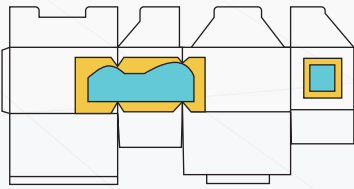
- **High-Speed Efficiency:**
Max speed **9,000** sheets/hr (155m/min), continuous **8,000** sheets/hr (138m/min), 24h non-stop.
- **Intelligent Sheet Collection:**
Auto count & stack collection for non-box products.
- **Precision Control:**
±0.5 mm film accuracy. (full-servo bus + proprietary tech)
- **Long-Term Durability:**
35% load-reserve servos; > **15** year life span.
- **Digital Intelligent Control:**
Digital feed, glue-position & film-length settings.
- **Synergistic Drive:**
6 servos + **3** motors; one-touch smart operation.

BOX TYPES

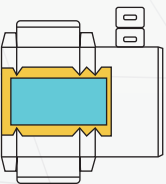
■ 2 Creasing Lines



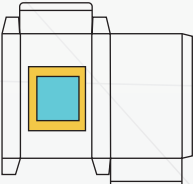
■ Double Windows



■ 3 Creasing Lines



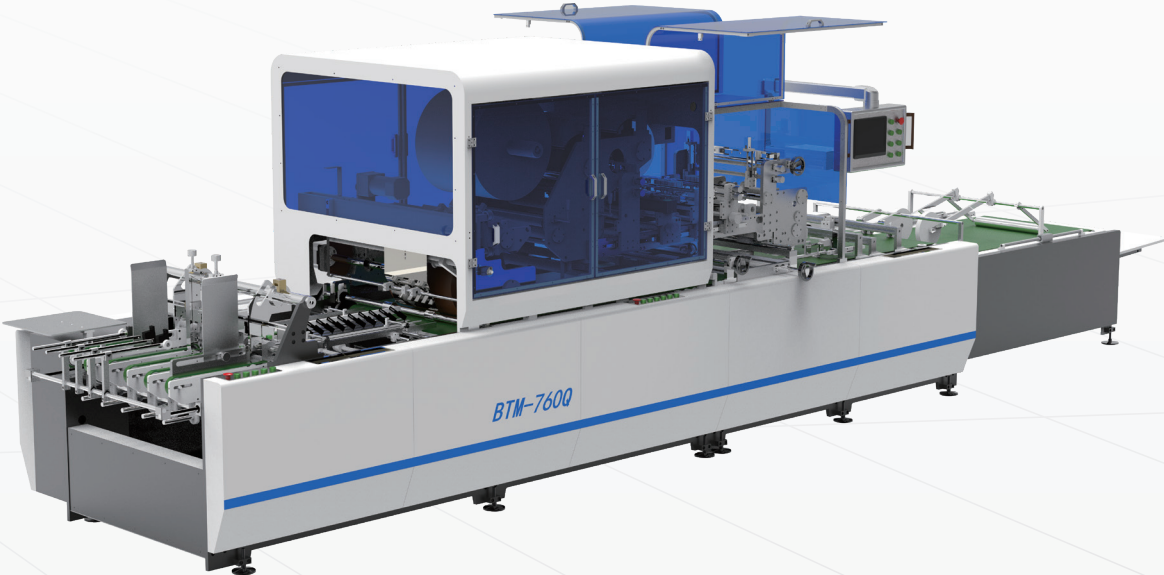
■ General Flat Window



TECHNICAL PARAMETER

Model	BTM-760Q	BTM-950Q	BTM-1100Q
Papersize (W×L)	760×780mm - 150×130mm	950×780mm - 150×130mm	1100×780mm - 150×150mm
Window dimension (W×L)	380×300mm - 30×50mm	380×300mm - 30×50mm	480×350mm - 30×50mm
Paper weight / sheet thickness	Cardboard: 200-2000g/m ² Corrugated board: 1-4mm		
Filmthickness	0.1-0.3mm		
Positioning accuracy	±0.5mm		
Machanical speed	Up to 9000sheet/hour		
Power voltage	380V/50HZ(Three-phase)		
Machine power	16kW		
Machine weight	3000kg	3200kg	3500kg
Overall dimension (L*W*H)	7500×1600×2000mm	7500×1750×2000mm	7500×1950×2000mm

※ The above speeds vary according to box shape and paper type.



WhatsApp



Linkedin



Facebook



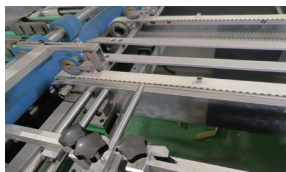
Paper Feeding System

- Features optimally stable separation blades with zero wobble when locked, ensuring superior paper separation.
- Single-plate feeding belt simplifies maintenance and replacement.
- Linear bearings enable smooth front/rear movement of the paper pressing mechanism; pneumatic vibration motors reduce noise and optimize vibration.



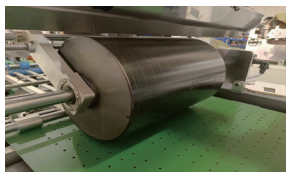
Paper Pressing Wheel Assembly

- Gear-driven dual-power transmission on upper/lower wheels delivers exceptional stability during paper conveyance, particularly with corrugated paper.



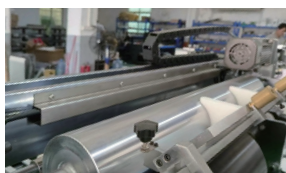
Pusher Claw System

- Linear guide fixation eliminates vibration (vs. linear bearings), ensuring stable paper feed.
- Patent-certified synchronous belt drive provides quiet operation, stretch resistance, oil-free performance, low noise, and sustained precision.
- Front/rear adjustable press wheels adapt to product positions; side-fixed design simplifies setup. Side guides synchronize with claws to reduce adjustment frequency and time.



Gluing System

- Independent servo drive allows parameter input via HMI without wrenches or phase adjustment.
- Hard-anodized aluminum alloy glue rollers offer lightweight and high hardness.
- Optimized program with glue sensor enables automatic activation with product presence, separation without product, and jam alarm/shutdown.



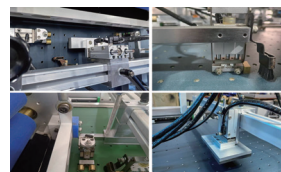
Glue Distribution System

- Dedicated servo drive simplifies transmission and maintenance. Entire unit slides out for cleaning.



Film Forming Section

- Dual-servo drive technology (patent-certified) integrates film feeding, horizontal creasing, punching, print registration, vertical creasing, and cutting for precision forming.
- **Film Feeding Unit:** Dual linear guides prevent swing arm deviation; PLC-controlled motor runs continuously during start/stop; heating optional for films ≥ 0.25 mm.
- **Horizontal Creasing:** Linear module + stepper motor (smooth high-speed operation, easy maintenance).
- **Punching Unit:** Cylinder-driven metal mold; front/rear adjustment (linear guides+rack-and-pinion); left/right adjustment (linear guides + ball screws).
- **Print Registration:** Precise adjustment of printed patterns.
- **Vertical Creasing Unit:** Vertical adjustment (linear guides + eccentric blocks); horizontal adjustment (guides + ball screws).
- **Cutting Unit:** Cylinder-powered spring-compressed blades for quick adjustment.



Lamination Section

- **Front positioning:** Two cylinders + four bearings + positioning block (bearings contact belt, block suspends to protect belt).
- **Side positioning:** Conventional guides or invention-patented push gauge.
- **Pneumatic double-pressing sequence:** Boxes positioned → film extended → belt stops → pressed/cut → system reset.



Box Collection Unit

- Fish-scale collection structure with weighted rollers enhances film-box adhesion.



Electrical System

- INOVANCE components (China's top-tier brand) with bus-based control ensure efficient, stable operation and simplified maintenance.